

# We are Cleanfix



**Machines built by pros for pros – we understand cleaning!**



- Quality products, engineered and made in Switzerland with quality components and designed to last.
- Setting new standards in terms of ergonomics, operating comfort, efficiency, product life cycle and future-oriented working.
- Providing tailored support to every industry, sustainability and productivity are core values that continue to bridge the entire range.
- Easy and less costly replacement of all spare parts, with a one-of-a-kind online spare parts system.
- Sustainable philosophy in operation – from solar panels to the reuse of water and old machine parts to create new ones, as well as a reduction in the need to transport bulky items thanks to in-house molding.
- Strong and extensive experience in R&D and innovation based on tradition, putting us ahead of the competition.
- Everything we do is designed to meet your current and future needs.
- Large worldwide support and service network with well trained staff.
- Robust, efficient, durable, easy to operate machine solutions to help you cut down time and costs in operations and deal with the challenges of qualified labor shortages and sustainability within the market at a beneficial price to quality balance.
- Performance you can trust.
- Cleanliness has a name – Cleanfix.

**Clean. Cleaner. Cleanfix.**

# Grüezi. Hello. Salut. Hallo. Servus. Dag.



**»» Quality, performance, efficiency and longevity that you can trust – our core and our legacy.**

## **A message from our CEO Felix Ruesch**

Cleanfix is a family-owned company that has been developing and manufacturing high-quality cleaning machines in Switzerland for almost 50 years.

**»» Social responsibility towards our employees and communities, environmental awareness, steady improvement and the highest level of quality are at the core of how we think and act.**

By continuously adapting, developing and streamlining our processes and systems, we can continue to deliver innovative, high-quality products made in Switzerland.

Cleanfix has been investing in initiatives that address its environmental impact and continues to do so. This is an ongoing process, in which the company's facilities in Switzerland are 95% powered by solar energy (climate neutral in India).

Reuse of water is incorporated into our processes, while heat waste from production is used to heat our facilities.

Internally, in-house recycling of old machines and plastic parts has already led to recycle accounting for up to 50% of the material used for our machines and, in some models, as much as 95%.

In-house molding of plastic parts helps to drastically reduce products' carbon footprint, as there is no need to ship large volumes of parts over hundreds of kilometres; logistics is a major factor in carbon emissions.

Our cleaning machines have an unrivalled innovative, quality and cost-effective due to the in-house processes and control lead to an unmatched longevity.

Our machines are built to last and provide a more sustainable approach owing to the life span and exchangeability of spare parts. The complete immediate availability of all spare lines is guaranteed at Cleanfix.

**»» The availability of spare parts remains secure, even though it is many years since the last machine was delivered.**

Operational simplicity, reliability and performance combined with quality, innovation and tradition are at the core of how we act.

A long-term sustainable partnership with suppliers, employees, distributors, and customers is the ultimate goal of the management of Cleanfix.

CEO Cleanfix Reinigungssysteme AG  
Felix Ruesch

# Locations



**160 employees** work for Cleanfix **worldwide**  
Of these, **110 employees** work in **Switzerland**  
Our **distribution network** is active in over  
**90 countries**

Cleanfix has **2 manufacturing plants**,

- one at its headquarters in Switzerland
- and Cleanfix Schevaran Systems in India

“  
Tradition  
meets quality and  
innovation.”

# Milestones



**1975–1978**

1975 Founding of Siprotech  
1978 First own spray extraction machine



**1981–1990**

1981–1986 Building of international network, including branches  
1983 First Scrubber Dryer RA 450  
1989 Manufacture of own pumps  
1990 Launching the Sweeper HS 770



**2006**

Start of operations at new logistics center in Henau

**1992**

Production of first scrubber dryers with vacuum

1997  
Takeover of Selco (Henkel ESM)

**1995**

Change of name to Cleanfix



**2015/2016**

2015: Market launch RA660 Navi  
2016: Winner Innovation Award Amsterdam

**2009**

Launch of first cleaning robot

**2020**

Launch of the RA660 Navi XL Pure & Connect

**2022**

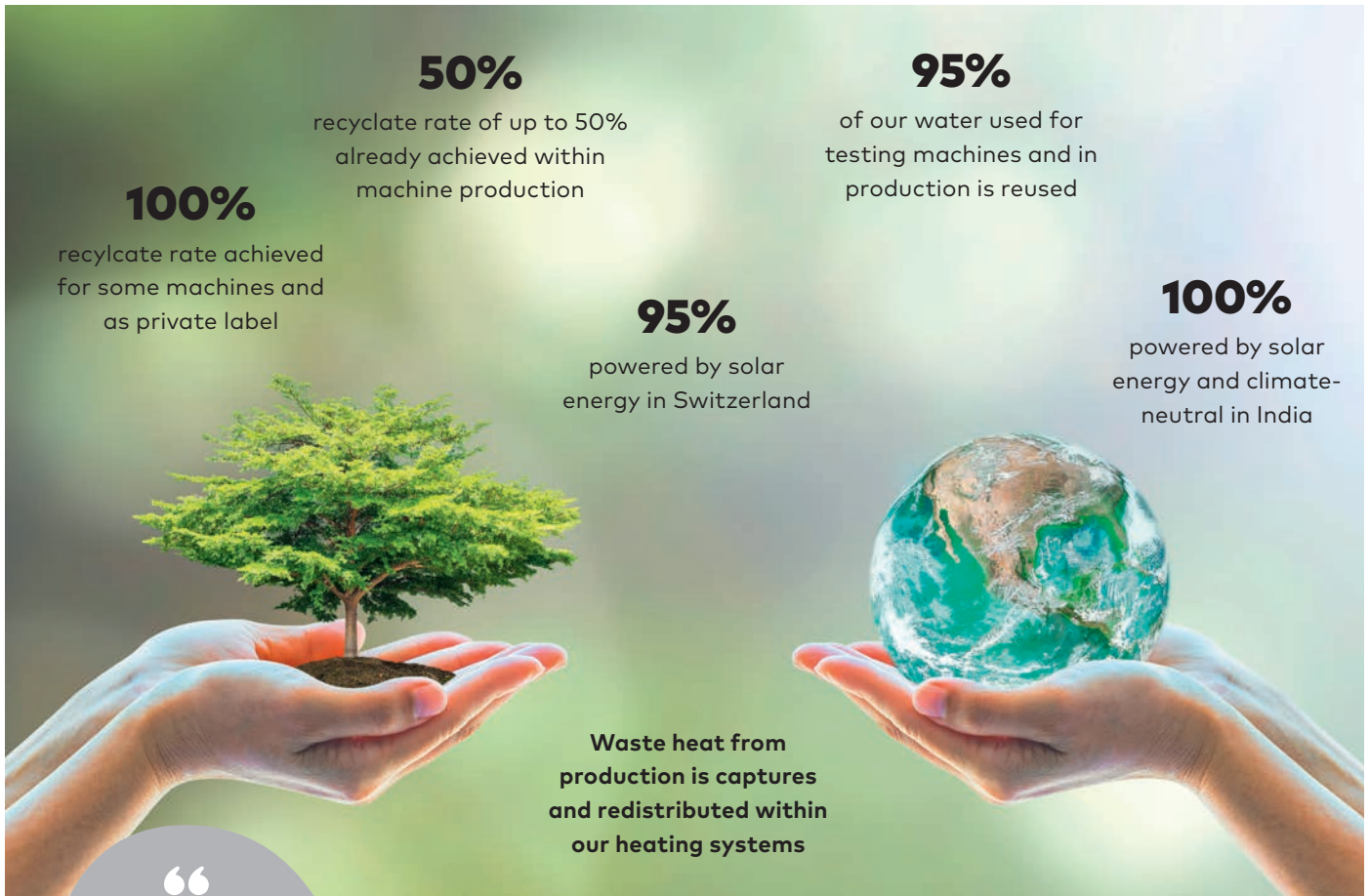
Launch Cleanfix S170 Navi Dry vacuum with FieldBots OS



**2021**

Joint Venture Schevaran India  
Webshop Launch  
Launch RA660 Navi XL Unlimited (with docking station)

# Sustainability



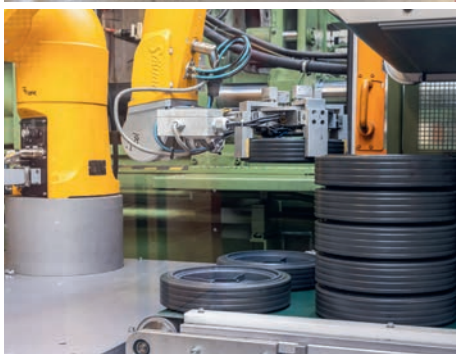
“  
Sustainability  
is a journey,  
not a destination.”



## India JV

- 50,000-sq f facility, located at Thandya in Mysuru's Nanjangud district.
- Sustainability was at the core of the joint venture right from the beginning at our new plant in India that was built from scratch.
- Recycling rate of up to 50% already achieved for old machine plastics, which we reuse as recylcate.
- Rainwater is harvested at the site, with enough water collected to ensure that the plant runs smoothly.
- Specific plants have been planted to tighten the soil to prevent the erosion of topsoil. Conscious use of resources.

# Quality & Life Cycle



## Cleanfix setting new standards

- Made in Switzerland means that 60% of all parts are sourced and assembled in Switzerland/Europe.
- Our products are made with quality components and designed to last.
- Lean production lines, organized processes, every machine has its own well organized production line for assembling.
- In-house molding of most plastic parts, robust and stable and of the highest quality.
- In-house pump production for extraction, as well as other machines, with the highest levels of quality.
- In-house production of most bulky parts (e. g. plastic tanks) means we don't have to ship them around the world over huge distances, thus leading to a drastic reduction of our carbon footprint. Transportation produces up to 23% of our emissions worldwide.
- Made in Switzerland/Europa delivers on quality for longevity of machines and parts. In addition, almost every part within our machines is replaceable. Using buttons and simple digital boards leads in replacement to more sustainability and fewer costs compared to pad-type digital boards.
- Cleanfix is setting new standards in terms of ergonomics, operating comfort, efficiency, product life

“  
Everyone knows  
the precision  
and quality of  
Swiss knives  
or knives.”



cycle and future-oriented working. Providing tailored support to every industry, sustainability and productivity are values that continue to bridge the entire Cleanfix range.

- Everything we do is designed to meet your needs.
- So, thanks to a very high level of in-house production and robust easy-to-replace spare parts, Cleanfix is able to realize massive CO<sub>2</sub> savings.

# Quality & Life Cycle



“  
Solving the  
challenges of  
tomorrow  
already today.”

**Reduced logistics** – Thanks to in-house production, no bulky parts have to be shipped large distances.

**Solar energy** – 95 to 100% use of solar energy within production.

**Recyclate** – Reuse and use of our plastics to rebuild machines.

**Longevity** – Long life time of our machines and easy replacement of almost every spare part increases longevity. Use of heat and water – conscious use of resources like heat and water within our production and operations.

**Newest initiative** – By joining the CAS battery system, we are taking a more conscious and sustainable approach to the use of batteries.





# Training & Know-how

“  
Training of  
our staff and part-  
ners is at the core of  
our thinking.”

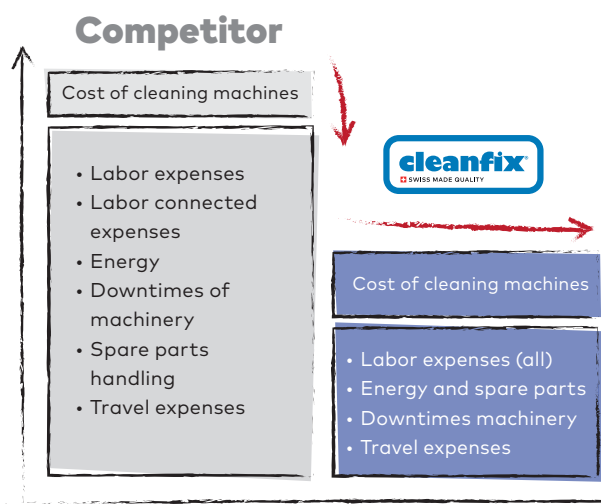


## We start with expert advice

- Training of our staff and partners is at the core of our thinking, so look no further.
- So that you can assess the whole life cycle of our product to properly evaluate costs and sustainability factors.
- So that you can concentrate on reducing your real cost factors in any cleaning process.

## Costs in any cleaning job

- Labor and labor connected costs 80–85%.
- Costs of machines and energy 10–15%.
- Costs of chemicals and tools 5%.
- In working with us, this leads to the Cleanfix-effect.
- Training of your staff in times of challenging qualified talent shortages is essential; this includes easy and robust machines and our know-how.



# Dry vacuum cleaners



## Small, silent, agile, durable and efficient power packages in vacuum processes. Performance you can trust.

- 850 W/250 mbar.
- Usable indoors/outdoors, on carpets and all floors.
- Dustbags system to eliminate dust and fine dust problems and secure hygiene also within the system.
- The most reliable and stressable suction hose available.
- Extensive, high-quality and durable accessories range made in Europe.
- The most robust and easiest to handle vacuum solution.
- Every spare part is exchangeable. Even motors.
- Longevity as a result of high quality made in Europe, which leads to a longer life span, more sustainability and fewer costs.

Overview complete product range:



S10 plus SL



S10 plus  
Soon also with  
CAS Battery System

**RS05 CAS**  
CAS Battery System,  
one battery for 300 different  
machines (for example metabo)  
No cable unit in objects  
up to 1 hour savings



# Wet/dry vacuum cleaners



## Strong, powerful, agile, efficient and silent combi vacuum system for dry and wet cleaning vacuum processes.

- Usable indoors/outdoors on all floors.
- Two-part built unique tank.
- Patented float (swimmer) system – switches the system off when filling capacity is reached and eliminates foam build-up through cyclon technology, protecting the motor.
- Reliable, high-quality accessories range made in Europe.
- Robust, efficient, easy to operate and durable.
- High and quickly available spare part exchangeability.
- Longevity thanks to high quality made in Europe, including motor protection by a unique float system, which leads to longer life span, more sustainability and fewer costs.



Patented float (swimmer) system

Overview complete product range:



SW20 plus



SW21 Aqua



SW22

# Spray-extraction machines

**Strong, durable, powerful, agile and silent extraction machines. Over 45 years of experience and know-how.**

- Flexible, agile and strong solutions for all kinds of indoor and outdoor extraction cleaning.
- Strong suction after cleaning for less wet areas after use.
- Robust and efficient extraction cleaning machines for multi-applications like carpets, upholstery, floors and mattresses (multi-application in one unit).
- Faster and more efficient to cut down time and costs, loosening even the most stubborn dirt with water pressure and vacuuming it up with less wet surfaces afterwards.
- Every spare part is exchangeable. Even motors.
- Longevity as a result of high quality made in Europe, robust, simple to operate and most durable, which leads to a longer life span, more sustainability and fewer costs.



Overview complete product range:



**TW411**  
Soon also with  
CAS Battery System



TW300 S



TW Compact



TW1250

# Single disc machines



**Extensive range of robust, easy to handle, agile, durable, efficient and powerful single disc machines (SDM) for all kinds of applications and surfaces.**

- Strong and heavy SDM, Poly-V-Belt-Drives offers exceptionally low noise levels and stability in operation.
- Robust and powerful motors from Europe, all parts exchangeable.
- Belt drive transmission for smoother operation and durability.
- Fast and easy powerful results.
- Clean, polish & grind – you can do it all.
- Huge range of high-quality brushes and accessories.
- Every spare part is exchangeable.
- Longevity as a result of high quality made in Europe, robust, simple to operate and most durable, which leads to a longer life span, more sustainability and fewer costs.



Overview complete product range:

**FloorMac**  
with oscillating drive  
(Excenter Technology)

Soon also with  
CAS Battery System



R44-180



R44-450 High-Speed



PowerDisc LS



**Scrubby**  
Safe time and money  
and deal with stair-  
ways, corners and  
edges most efficient

Soon also with  
CAS Battery System



# Scrubber dryers

**Powerful, manoeuvrable, robust, silent, efficient and most easy to operate scrubber dryers.**

- Robust and powerful, motors from Europe, all parts interchangeable.
- Easiest operation, best ergonomics and most durable machines in operation.
- Best ergonomics thanks to adjustable functions.
- Simple operation and adjustable speed / vacuum and water dosage, all by either buttons or simple and easy digital board handling.
- Easy replacement of spare parts, less downtime.
- Longevity as a result of high quality made in Europe, robust, simple to operate.
- No complex digital boards to operate, easier and less costly in replacement.
- For some of our machines you can use the same pads and brushes as on our SDM range.
- This all leads to a longer life span, more sustainability and fewer costs.



RA435



RA395



RA431



RA470

Overview complete product range:



**RA605-2**  
Two contra-rotating brushes for streak-free cleaning



# Ride-on scrubber dryers



**We were asked for maneuverability and speed. We also made our ride-on models powerful, efficient, strong and easy to operate and maintain by securing every detail needed.**

- For daily cleaning of larger surface areas like stores, malls, airport areas, workshops and industrial sites.
- Easy handling thanks to simple operation and functions.
- RA805/RA905 maneuverability and speed, working width 76/86 cm.
- Water dosing, chemical and vacuum adjustable.
- Speed-dependent water dosing.
- 4 wheels for better weight distribution.
- Small turning circle as a result of an almost 90° wheel angle.
- Now with the newest generation of programmable features and new technical boards in the models, latest technology upgrades 2023.
- Easy and robust technology, as well as being most durable, which leads to more longevity, more sustainability and fewer costs as a result of the high quality from being made in Europe.

Overview complete product range:



RA805

# Sweeping machines



## Powerful, robust, efficient, silent and easy-to-operate machines for all sweeping areas – compact, maneuverable and emission-free.

- For daily indoor and outdoor sweeping of stores, fuel stations, fast food areas, hotels, parking and stocking areas.
- Easy but powerful handling as a result of the simplest operation and functions.
- HS770 is unbreakable and robust for the toughest operations. No noise or emissions; rolling and side brushes integrated.
- KS650 IBC is battery-operated and fitted with an onboard charger; no harmful emissions.
- Sweepers remove dirt and dust from all hard floors thoroughly, cleanly and quickly.
- Easy and robust technology, most durable, quick spare parts handling, longevity as a result of high quality made in Europe, which leads to longer life span, more sustainability and fewer costs.

Overview complete product range:



KS650 IBC

HS770

**FloBe 2**  
The machine is battery-operated and can run independently for up to two hours. Save time and money.



# Ride-on sweeping machines



## Powerful, robust, efficient, silent and easy-to-operate machines for all sweeping areas – compact, maneuverable and emission-free.

- Powerful, silent and easy-to-operate machines for all sweeping areas – compact and maneuverable.
- For daily indoor and outdoor sweeping of large stocking (indoor and outdoor) or indoor/outdoor areas.
- Easy handling thanks to simplest operation and functions.
- The large filter, a large flap and the climbing rate over 20% are strong points.
- Battery-operated.
- Sweepers remove dirt and dust from all hard floors.
- thoroughly, cleanly and quickly – fewer problems in stocks with fine dust over a short time.
- Easy and fast spare parts handling, longevity as a result of high quality made in Europe, which leads to longer life span, more sustainability and fewer costs.

Overview complete product range:



KS1100 B



KS1100B HD

# Dry vacuum robot



**The world's first dry vacuum robot with fleet management specially developed for and revolutionizing professional floor cleaning. Control your dry vacuum robot fleet cross-floor or cross-site in a simple, intuitive cloud-based app (FieldBots OS).**

- Intelligent docking station, for autonomous dirt disposal and battery charging as standard.
- The seamless FieldBots OS integration allows fleets of several hundred robots to be centrally managed in one tool, either via phone, tablet or computer.
- No cameras or microphones integrated to allow more data security.
- Revolutionizes professional floor cleaning.
- Cleaning independently according to a systematic algorithm (no chaotic random cleaning) and intelligently adapts to changes in its environment.
- The roller brush with rubber blades and brushes helps to collect even deep-seated dirt.
- With a built-in HEPA filter and exchangeable dust bags.
- With automatic LiDAR mapping and editable cleaning maps (add virtual walls, no-go areas, and also creates subzones for cleaning zone-based cleaning).

Overview complete product range:



S170 Navi



FieldBots OS

Discover more on  
[www.cleanfix-robotics.com](http://www.cleanfix-robotics.com)

# Scrubber-dryer robots



## The next generation of autonomous scrubber-dryer, built by the industry for the industry. Innovation out of tradition, ahead of the competition.

- Over 15 years experience in developing and installing autonomous scrubber-dryers for industry and commercial.
- Reliable and suitable for all applications: Our navigation system is also used in over 4000 industrial AGVs/AMRs in various Industries. Interoperability with other AGVs.
- Location-independent remote control with our app-based RA660 Navi Mission Control app.
- High data privacy; no cameras or microphones
- Optional autonomous docking station for fully automatic refueling of water and energy.
- On the spot turning, allowing cleaning in narrow corridors.
- Multi-level cleaning: interface to trigger elevators or doors.
- Three easy to change brushes (or pads), a powerful suction bar and wheels with strong grip even on wet surfaces.
- Fast charging, high safety through several sensors, detailed cleaning plans and reports.
- Reduction of cleaning costs by up to 70%.
- RA660 Navi Individual: Fit your cleaning robot to your company's corporate design.

Overview complete product range:



XL

M



RA660 Navi XL



RA660 Navi M

### Docking station



Discover more on [www.cleanfix-robotics.com](http://www.cleanfix-robotics.com)

Clean. Cleaner. Cleanfix.



**Headquarter**

Cleanfix Reinigungssysteme AG  
Stettenstrasse 15  
9247 Henau-Uzwil / SG  
Phone +41 71 955 47 47  
info@cleanfix.com

[www.cleanfix.com](http://www.cleanfix.com)